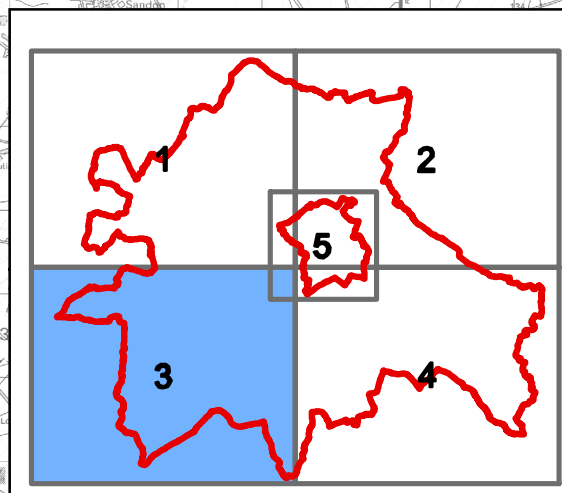



**KEY**

- South Cambridgeshire DC & Cambridge City Council Boundaries
- Fenstanton and Fen Drayton
- Old West Flood Defence
- River Cam from Cambridge to Upware
- River Cam from Gt Chesterford to Hauxton
- River Granta from Linton to Stapleford

**TITLE:**  
SOUTH CAMBRIDGESHIRE DC  
AND CAMBRIDGE CITY COUNCIL  
LEVEL 1 SFRA

**FIGURE No:**  
FLOOD WARNING AREAS  
1402 - C - 4.3

Reproduced from Ordnance Survey data by permission of the Controller of Her Majesty's Stationary Office. © Crown copyright (2008). All rights reserved. License No. 0100022500. © 2008 NAVTEC

0 1 2 3 4 Kilometres SCALE: 1:90,000